

**TRAFFIC DEMAND DYNAMICS DURING URBAN FREEWAY
SHORT-TERM LANE CLOSURES**

Xiao Qin, PhD, PE*

Assistant Professor

Department of Civil and Environmental Engineering

South Dakota State University

Brookings, SD 57007

Email: Xiao.Qin@sdstate.edu

Kelvin R. Santiago-Chaparro

Research Assistant

Department Civil and Environmental Engineering

University of Wisconsin-Madison

Madison, WI 53706

Phone (787)438-4076

Email: ksantiago@wisc.edu

David A. Noyce, Ph.D., P.E.

Associate Professor

Department of Civil and Environmental Engineering

University of Wisconsin-Madison

1204 Engineering Hall

1415 Engineering Drive

Madison, WI 53706

Phone – (608) 265-1882

Email: Noyce@engr.wisc.edu

Submitted for Presentation and Publication for the 89th Annual meeting of the
Transportation Research Board

January, 2010

Word Count: 4445+ 3 table and figures ×250=5195

*: Corresponding Author

1 ABSTRACT

2 The Texas Transportation Institute (TTI) 2007 mobility report shows traffic congestion is
3 worsening in American cities of all sizes, creating \$78 billion annual lost hours and 2.9 billion
4 gallons of wasted fuel per year. Meanwhile, aging roadway infrastructure needs to be frequently
5 maintained to sustain their quality service for the traveling public. Compared to long-term
6 construction zones, short-term work zones (6~8 hours long) are more frequent, but do not receive
7 equal attention due to their low impact. Lane restriction or closure, however, is still inevitable
8 for most maintenance activities and delay may happen even during off-peak periods. The
9 accumulated impact of short-term closures due to their high frequency on a segment cannot be
10 overlooked; especially if the segment carries large traffic volume during peak hours and/or off
11 peak hours.

12 By using lane closure information and traffic data from the southeastern Wisconsin
13 freeway systems, this study aimed to obtain a clear understanding of the dynamic nature of
14 traffic demand and quantify it as a function of driver characteristics and corridor features. To be
15 specific, the results of the study identify that, in general, a low density of signalized intersections
16 along the arterial routes, high historical mainline traffic, and a short alternative route distance
17 encourage drivers to divert. Consequently, traffic impacts at off-ramp terminals and arterial
18 streets can be estimated via regression models, which in turn assist with informed decisions such
19 as the deployment of advanced traveler information systems.

20

21 Key Words:**22 Short-term Lane Closure, Traffic Diversion, Gravity Model, Congestion Mitigation**

23

1 INTRODUCTION

2 Urban freeway pavement conditions and infrastructure durability have deteriorated and have
3 been affected by the large amount of traffic carried every day. To keep a constant level of
4 service and maintain the same driving quality for travelers, highway rehabilitation and short-term
5 maintenance activities (6~8 hours) are frequently performed before a major reconstruction is
6 required. Consequently, a lane restriction or partial closure is inevitable in order to ensure an
7 uninterrupted and safe area for construction workers. Because most maintenance activities are
8 conducted in the daytime, they may create congestion and unnecessary delays to motorists. Due
9 to the limited coverage of permanent changeable message signs (CMS), the deployment of
10 portable CMS to disseminate traveler information has to be prioritized and optimized due to the
11 large number of requests. Normally, the portable CMS deployment is decided based on the
12 particular lane closure and a delay assessment for the selected corridors. Historical traffic data
13 collected through loop detectors is able to distinguish the high traffic demand locations in normal
14 conditions, but fails to consider demand changes in congested conditions. Previous research
15 shows that drivers are fairly responsive to a potential or existing congestion situation through
16 their own observation and judgment, a phenomenon called “natural diversion”, which reduces
17 the normal demand by up to 30%.

18 Compared to the long list of publications in the area of congestion mitigation and safety
19 impacts for long-term work zone activities and recurrent bottleneck congestion, studies on the
20 traffic impact associated with short-term work zone activities are relatively limited. One of the
21 plausible reasons for lacking the needed attention may be because of the underestimated delay
22 caused by these short-term lane closures and restrictions. It is understood that the work zone
23 activities, primarily maintenance work, last between six to eight hours, often scheduled during
24 the daytime off peak period. Unlike their long-term counterparts, it is unusual for short-term
25 work zones to be equipped with any advanced traveler information (ATI) equipment because of
26 their high frequency and short approval lead time. However, a lane restriction or partial closure
27 is necessary during the construction or maintenance, which will interfere with traffic especially
28 in the urban freeway environment, where a longer peak periods and inappreciative difference
29 between peak and off-peak periods exist. Again, when considering the high frequencies of such
30 lane closures or restrictions, the cumulative traffic impact will be significant.

31 The goal of the study is to obtain a clear understanding of the dynamic nature of traffic
32 demand and quantify it as a function of driver characteristics and corridor features. As a
33 representative of other urban metropolitan areas in the country, southeastern Wisconsin,
34 including the City of Milwaukee, consists of a massive urban freeway system and a well-
35 connected arterial network. The Wisconsin Department of Transportation (WisDOT) State
36 Traffic Operational Center (STOC) maintains a computerized Lane Closure System (LCS) where
37 thousands of lane closure events have been registered. The WisLCS provides a generalized
38 observation of the impact of short-term lane closure or restriction in an urban environment and
39 establishes a foundation for developing lane closure delay models. With the WisLCS, this
40 research study was expected to identify the key elements causing or mitigating delay related to
41 short-term lane closures and develop realistic prediction models for estimating congestion
42 demand without ATI.

43

44 LITERATURE REVIEW

45 Drivers route choice behavior during congestion has been a prolific area in travel demand studies
46 where abundance publications cover a broad spectrum of topics. Abdel-Aty et al. constructed

1 five different scenarios of traffic information and explored drivers' diversion decision under each
2 of them (1). The five scenarios addressed included: no information, pre-trip information without
3 and with advice, and en-route information with and without advice. The results show extra
4 information such as advice would encourage drivers to divert from their normal routes;
5 expressway users are more likely to divert; and high number of traffic signals on the normal
6 route increase the diversion probability. With the flourish of infrastructure-based traveler
7 information systems and real-time personal travel information subscriptions, motorists have
8 access to a plethora of information that may change their driving patterns and assist them with
9 better route choice to avoid unnecessary or excessive delays. Accordingly, research interest,
10 with the special focus of en-route information provided via Variable Message Signs (VMS) has
11 grown.

12 Khattak et al. investigated commuters' diversion propensity using stated preference
13 method. Respondent drivers expressed a higher willingness to divert if expected delays on their
14 usual route increase and if the congestion was non-recurrent (2). A combined revealed and stated
15 preferences conducted by Polydoropoulou et al. indicated expected delays in the usual route,
16 travel time on alternative routes, perceived congestion level on alternative routes, and
17 information sources are important determinants of diversion (3). Levinson, et al. studied the
18 impact of real-time incident information disseminated via VMSs on urban drivers' decision-
19 making, with a focus on the content and timing of the information (4). The study showed,
20 through detailed VMS logs, that the diversion rate was significantly impacted by factors such as
21 the nature of the incident, time period, type of message, alternative exit availability and their
22 interactions. Chu et al. observed a decrease in the maximum mainline delay via detector data
23 and further suggested that Advanced Work Zone Information Systems improved safety by
24 smoothing traffic flow (5). A follow-up commuter survey confirms that approximately ninety
25 percent of travelers thought that the estimated travel time was accurate and more than 70 percent
26 of drivers changed their travel pattern; such as travel schedules, trip routes, and modes. Other
27 studies conducted in Wisconsin focusing on the rural and suburban congestion caused by work
28 zone activities evaluated the effectiveness of traveler information in several different aspects,
29 including the type of information dissemination, the format of the message, the placement of the
30 message board, the frequency, etc (6).

31 In spite of all the information provided through ATIS or based through drivers own
32 perception, the action of diverting is individual decision that is closely related to drivers'
33 personality and socio-economic characteristics. The significant socio-economic factors include
34 education level (1), familiarity of the network (7), and personal characteristics such as risk
35 averse, risk seeker and risk neutral (8). On the other hand, some studies have yield rather
36 controversial results, stating that most demographic variables have little influence on motorist
37 attitudes about VMSs, except for a few cases (9). Adbel-Aty also argued that age, gender,
38 income and driving experience were found uncorrelated with drivers' diversion from the normal
39 route decision (2).

40 In contrast, the research on drivers diversion behavior during the non-recurrent, i.e.,
41 incidence-induced or work zone related congestion without traveler information is very limited.
42 The diversion decisions, however, are not unusual. The most relevant study on this particular
43 topic discusses the changing traffic demand upstream of work zones without any assistance of
44 traveler information, referred by Ullman as "natural diversion" (10). "Natural diversion" occurs
45 when drivers decide to leave the freeway by off-ramp locations or not enter the freeway at on-
46 ramp locations to avoid congestion based on their observations of prevailing traffic conditions.

1 According to Ullman's study, a significant reduction in entrance ramp traffic upstream of lane
2 closures and a limited reduction in exit ramp traffic were observed. Ullman developed
3 mathematical equations to model the percentage of natural diversion volume using energy
4 analogy of traffic flow (11). The phenomenon was later proved in a separate research project in
5 Wisconsin where stabilized queues were observed due to natural diversion (12).

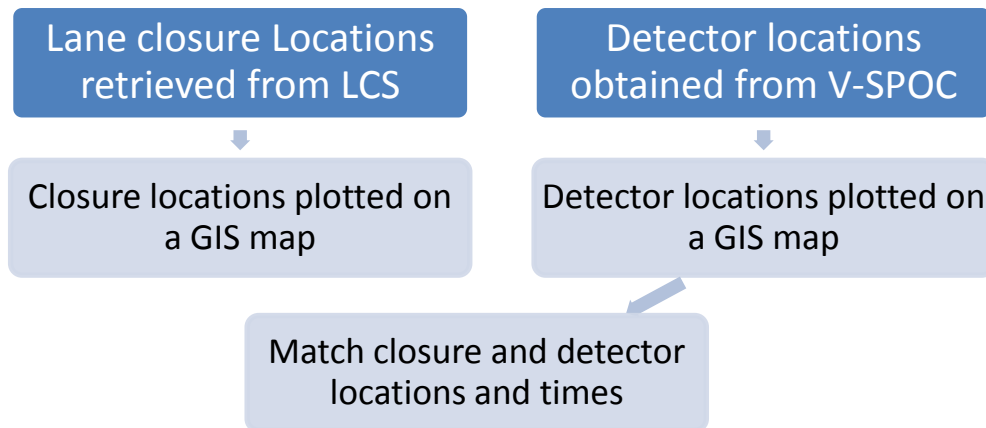
6 Both Ullman and Lee suggest that this issue be further studied to calculate the correct
7 traffic impact caused by short-term lane closure through additional information regarding traffic
8 volume, work zone capacity, and queuing length. A database or methodology can then be
9 developed to estimate the major factor, corridor permeability, describing the diversion potential
10 of a roadway corridor. Furthermore, the impact of diverted traffic to surface arterials and their
11 neighborhoods as well as upstream exiting ramp terminals may be significant because the signal
12 timing at these locations may not respond well a traffic volume surge.

13 14 **DATA COLLECTION AND PROCESSING**

15 In order to accurately capture the field traffic variations due to short-term lane closures, real-time
16 traffic information as well as the lane closure times and location are needed. Thanks to the
17 deployment of WisLCS and the Volume, Speed, and Occupancy Application Suite (V-SPOC),
18 extensive data were readily available. WisLCS is a web-based system used to track closures and
19 restrictions on Wisconsin state highways, including ramps. The important data elements in
20 WisLCS include, but are not limited to, closure configuration such as the number of lanes closed,
21 closure status, closure date, approved date, duration, and location including road name, latitude
22 and longitude. The short-term lane closures defined in this study are closures lasting fewer than
23 twelve hours and those not providing previous notice or detour information to the user. Data
24 collection started in January 2008 when the system was initiated and ended in April 2008. More
25 than 5,500 closures have been logged; among them 340 were preliminarily identified as possible
26 short-term lane closures. All of the studied closures were limited to the Wisconsin southeast
27 freeway system in the Milwaukee area.

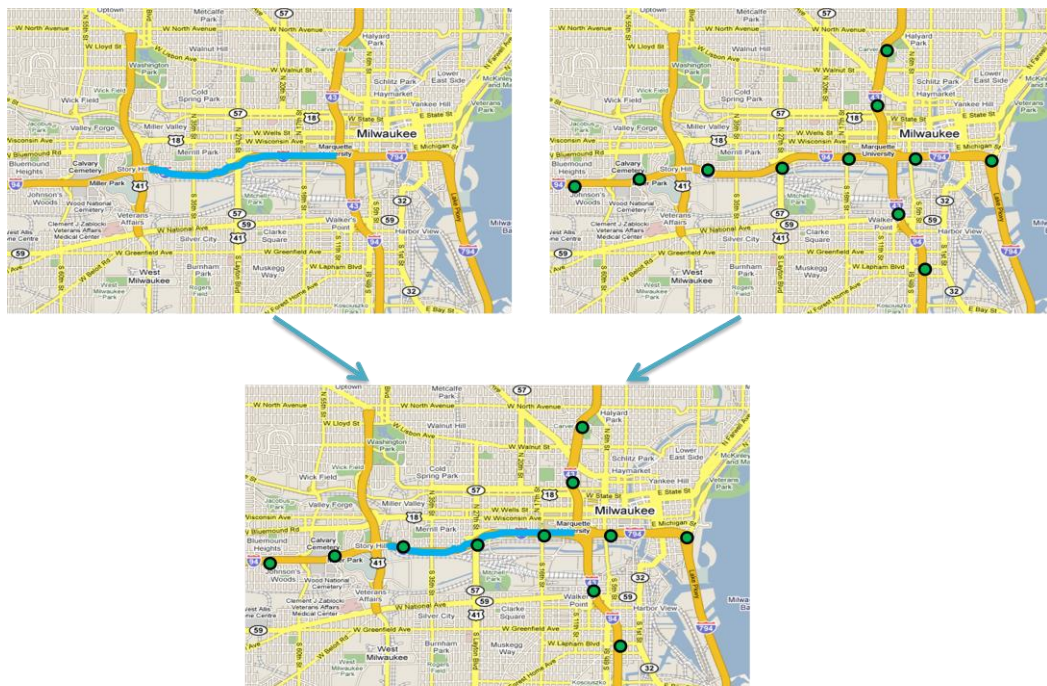
28 Along with WisLCS, the V-SPOC application suite is a web-based toolbox for analyzing
29 state highway traffic detector volume, speed, and occupancy data from the WisDOT Advanced
30 Traffic Management System (ATMS) data archive for the years 1997 to present. The data are
31 archived in intervals of 30 seconds and can be conveniently aggregated to interval such as 1-min,
32 5-min, 15-min, and so on. Of our interest is the data regarding detector location, historical
33 detector volume, speed, and occupancy including both mainline detectors and ramp detectors.
34 The development of an automatic connection between V-SPOC and WisLCS is still in progress.
35 In other words, to utilize and relate volume, speed, and occupancy information collected through
36 loop detectors on highways and ramps to individual short-term closure events, the two data
37 sources have to be linked manually. A methodology was developed to link each lane closure
38 location to corresponding available loop detectors graphically. As illustrated in Figure 1a, the
39 methodology includes joining the data from different databases in order to allow a map
40 representation of the WisLCS closure. Since the database information is joined based on an
41 online mapping service, it was required to design a procedure that allows importing the
42 corresponding data into a GIS software tool. The second dataset that needed to be visualized
43 corresponds to the loop detectors included in the V-SPOC database. As opposed to the WisLCS
44 location information, V-SPOC does not provide any information beyond the name of the street
45 on which each detector is located as well as a corresponding detector ID. An undergoing project
46 at WisDOT includes plotting each detector in the V-SPOC system and the corresponding ID on

1 hardcopy as-built plans. Thus, using the as-built plans from this project, an online mapping tool
2 was used to mark each of the loop detector locations. Taking advantage of satellite images, each
3 of the loop detectors was correctly located with lane-by-lane precision. Once over 800 loop
4 detectors were correctly plotted and stored in the online mapping tool, all of the detector data can
5 be linked with the closure information as shown in Figure 1b. Having all of the data plotted on
6 one map allows one to visually identify which loop detectors are located inside the closure as
7 well as the detectors located upstream of the closure, a crucial process in the determination of
8 queue length as well as speeds during the closure.
9



10
11
12
13

FIGURE 1a Conceptual data integration process.



14
15
16

FIGURE 1 Conceptual data integration process and the result of it.

1 However, after linking the two systems, the discrepancies between data required further
2 effort to perform data quality control and assurance. The in-depth investigation found that the
3 differences are caused by one or more of the following reasons:

- 4
- 5 1. Length of the closure, in terms of time, is often overestimated. V-SPOC data often shows
6 closure ending sooner than expected as well as closures starting after the scheduled time.
- 7 2. Closures are often not marked as completed. The person who entered the closure in the
8 system never changes it to completed status.
- 9 3. Scheduled closures did not take place. V-SPOC data shows normal volumes on all lanes
10 while the LCS says there is a closure at the corresponding detector location.
- 11 4. Shoulder work sometimes is scheduled as the closure of one lane. V-SPOC data shows
12 normal volumes on 'closed' lane but with significant speed reductions.
- 13 5. Location misrepresentation. The Latitude and Longitude coordinate for a closure in the
14 LCS database corresponds to a location outside the county where the closure is supposed
15 to take place.
- 16 6. Detectors failed during the scheduled closure and thus no data is received by WisDOT
17 from those sites.

18

19 Finally, a small number of lane closure events were retrieved and confirmed. The reasons for a
20 relative small number of samples compared to a large amount of lane closure events are:

- 21
- 22 1. Lack of V-SPOC data for some closures appearing on WisLCS.
- 23 2. No loop detectors installed at the location of the closure.
- 24 3. The starting point of a several number of closures is located near an interchange which
25 makes it unfeasible for analysis because the conditions of speed and volume near the
26 closure cannot be obtained.

27

28 In order to understand why motorists decide to divert without being notified and identify
29 the factors contributing to their decision-making, several additional data elements were collected,
30 primarily from local streets. These variables are considered a good representation of either
31 appealing or unattractive reasons for travelers to divert, or not divert, from mainline streets in
32 order to avoid delays. The following data were collected via a collection of means such as
33 Google Maps, etc.

- 34
- 35 1. Exit density upstream of the closure,
- 36 2. Entrance density downstream of the closure,
- 37 3. Alternate route length,
- 38 4. Posted speed limit on alternative route,
- 39 5. Area covered by alternative route,
- 40 6. Parallel distance between mainline and alternative route,
- 41 7. Signalized intersection density on alternative route, and
- 42 8. Unsignalized intersection density on alternative route.

43

44 After further data reduction, there were 13 lane closure events containing all available
45 traffic conditions, alternative route information, and observed congestion. The length of each
46 closure varies between 3 and 8 hours. Using one hour as the analysis interval, a total of 62

1 observations were collected for the study. Note that the short-term lane closures that did not
 2 cause any traffic congestion or mainline speed reduction have been removed from the dataset
 3 because it was assumed that no drivers would divert under free-flow conditions. All the
 4 variables are summarized in Table 1.

5
 6

TABLE 1 Variable Summary Table.

Variable	Min	Max	Average	Std. Dev.
Density Exits Upstream (exits/mile)	0.367	2.174	1.026	0.342
Density Entrances Downstream (ent/mile)	0.474	1.442	1.026	0.342
Alternate Route Length (miles)	2.1	3.7	2.63	0.645
Change in Speed at Closure (MPH)	-35	5.4	-22	13
Historical Mainline Volume (Vehicles)	1,200	1,730	1,410	120
Posted Speed Alternate Route (MPH)	35	45	37.7	4.5
Area Covered by Alternate Route (Sq. Miles)	40	755	334.5	216
Parallel Distance from Mainline (Miles)	0.03	0.32	0.19	0.52
Signalized Intersection Density (int/mile)	0.811	3.793	4.879	2.325
Unsignalized Intersection Density (int/mile)	14	32	23	5.49

7

8 In Table 1, the values for density downstream and upstream are computed by measuring
 9 the shortest distance from the start and end of the work zone that contains three entrances and
 10 exits correspondingly. Thus, if three exits are spread over 3 miles upstream of the work zone
 11 then the corresponding density is 1.0 exit/mile. Signalized and unsignalized intersection density
 12 was measured by taking into consideration how many of the corresponding intersections a driver
 13 has to navigate when following the shortest alternate route.

14
 15

METHODOLOGY

16

17

18

19

20

21

22

23

24

25

26

27

28

29

$$\delta = \frac{P \cdot A}{f(cost)} = \frac{(X\beta)^{\alpha \cdot H_v}}{f(cost)} \quad (1)$$

30

31

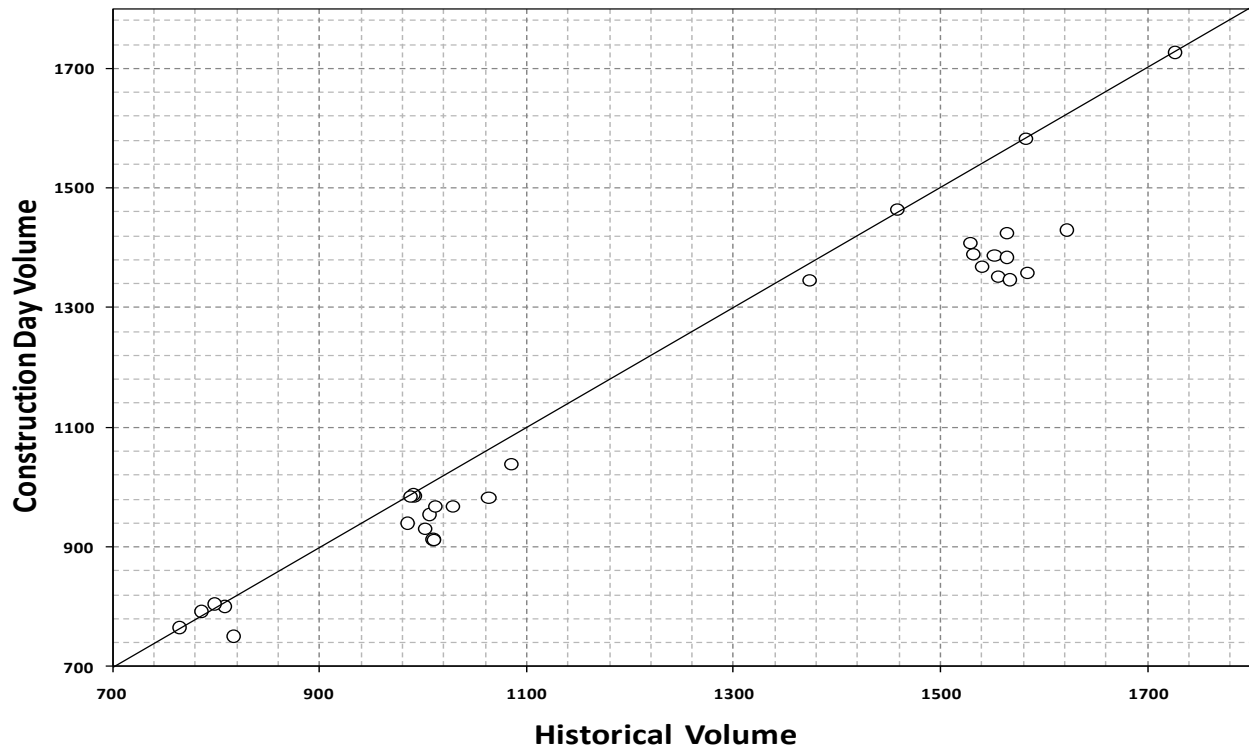
32

Where:

1
2
3
4
5
6
7
8
9
10

General Considerations

Even during the off-peak period, congestions and delays may occur because of the reduced mainline capacity. The results show that up to 15 percent of traffic will divert without any advanced traveler information, so called natural diversion, during the time intervals when the traffic flow rate exceeded 1,000 vehicles/hour/lane, with an increasing diversion trend with increasing mainline demand. The relationship can be clearly illustrated in Figure 2 where traffic flow rates (15-min interval) during construction are plotted as a function of the flow rates at the same location during the weeks prior to the closure.



11
12
13
14
15
16
17
18
19
20
21
22
23
24
25
26

FIGURE 2 Construction Day Volume at Closure Vs. Historical Volume

The changes in the traffic flow rates between historical and closure periods unambiguously suggest that traffic diversion happened. But with similar historical flow rates, diversion rates were higher at some locations or corridors than the others. The location-specific or corridor-specific variation indicates that some factors may be able to explain what causes the differences. All the arterial data were collected based on their potential of attracting or deterring motorists to divert in order to avoid possible or excessive congestion, presuming that the motorists have some knowledge of surface traffic and roadway conditions. Some factors were correlated to each other, whose relations were revealed through the Pearson correlation test. To avoid correlated variables while allowing the most valuable variables to be identified, variables were gradually added to the models, starting from the univariate model, then two variables, and so on. Only two-way interaction was considered to keep the model simple and appealing for application. After a series of model tests, the candidate variables were reduced to five:

- 1 • Entrance density downstream of the closure,
- 2 • Speed difference between normal and lane closure conditions,
- 3 • Normal (historical) mainline volume,
- 4 • Length of the alternative route, and
- 5 • Signalized intersection density in the alternative route(s).

7 Gravity Model for Diverted Traffic

8 Gravity model results in Table 2 show that the statistically significant variable at a 5% level of
 9 significance is the signalized intersection density on the alternative route, which appears to be a
 10 major concern for motorists leaving the freeway. The higher the signalized intersection density
 11 is, the lower the observed diversion.

12
 13 **TABLE 2 Model results.**

Gravity Model		Estimate	Std. Err.	t-Val	p-Val	R ²
$\partial = \frac{(x\beta)^\alpha H_v}{L_A^2}$	β	0.259	0.007344	35.271	<0.000	0.34
	α	3.027	0.477949	6.334	<0.000	
$\partial = \frac{(x\beta)^\alpha H_v}{\exp(L_A)}$	β	0.327	0.01187	27.574	<0.000	0.34
	α	3.317	0.50286	6.596	<0.000	

14 15 Linear Model for Relative Mainline Demand Reduction

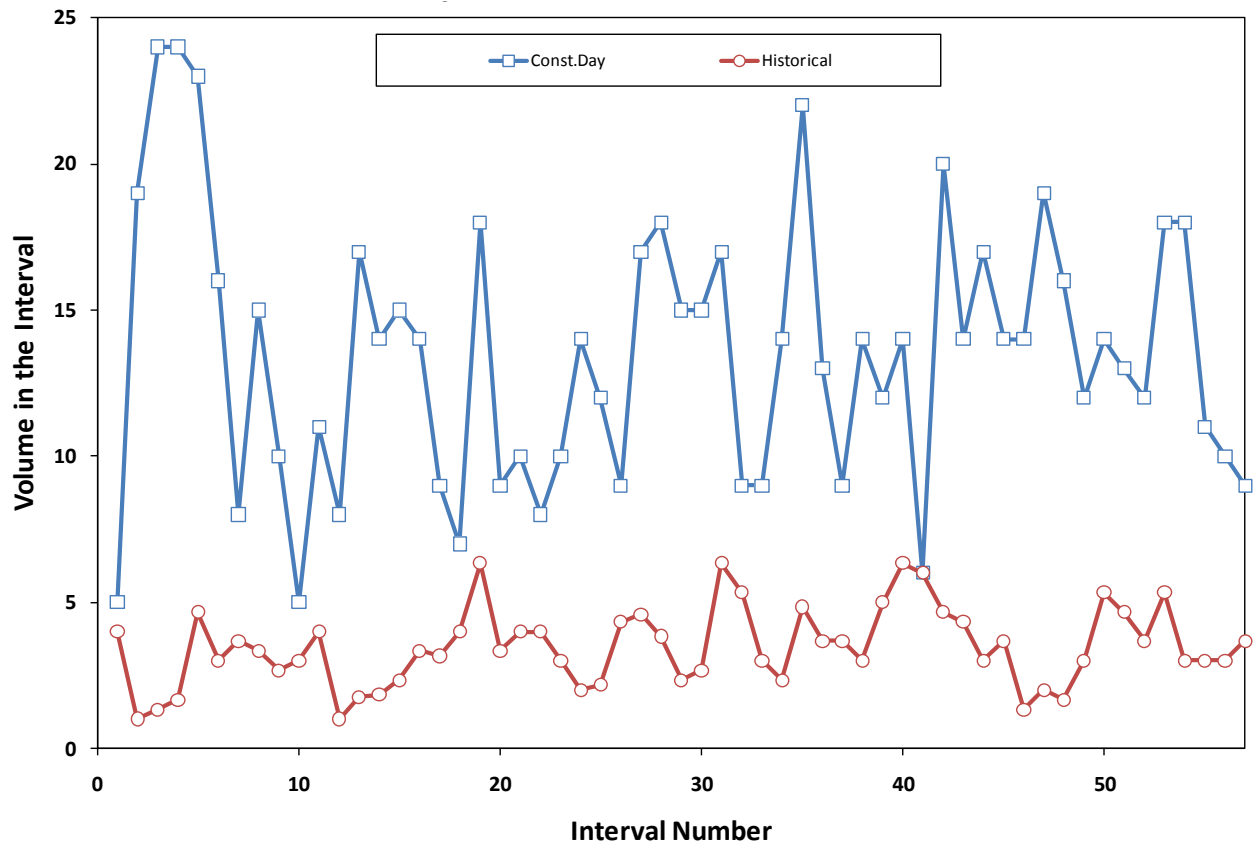
16 As a comparison to the gravity model structure, a simple linear model was considered where the
 17 dependent variable was the relative mainline demand reduction instead of the absolute value of
 18 diverted traffic. Several linear models have been tested and two final models were chosen
 19 because of their effectiveness in describing the attractiveness of the alternative routes. Similar to
 20 the gravity model, and also a linear model after a log transformation, high signalized intersection
 21 density makes the arterial route less desirable. The speed differential, an important congestion
 22 index, between normal and lane closure days proves that the higher the speed difference is,
 23 indicating a high possibility of congestion, the higher relative diversion will occur. Though R-
 24 square suggests that the simple linear models perform better than the gravity models, the
 25 difficulty of applying the speed differential factor is that the speed information on lane closure
 26 day will not be available for traffic congestion mitigation planning. However, it is possible that
 27 an estimated speed reduction may be recommended if the linear models are used.

28
 29 **TABLE 3 Linear Model Results.**

Model	Variable	Coeff.	Std. Err.	T-Val	P-Val	R ²	Adj. R ²
Model 1	Intercept	0.03009	0.01646	1.83	0.073	0.588	0.574
	Signalized Dens.	-0.031272	0.006399	-4.89	<0.000		
	Delta Speed	0.0038573	0.000463	8.32	<0.000		
Model 2	Intercept	0.02399	0.01954	1.23	0.224	0.525	0.509
	Density Downstream	-0.06542	0.1823	-3.59	<0.000		
	Delta Speed	0.003857	0.00463	8.32	<0.000		

1 **Linear Model for (Exiting) Ramp Traffic**

2 Figure 3 illustrates the difference in traffic flow rates between normal (historical) and lane
 3 closure periods. It is obvious that the increase of exiting traffic was considerably higher during
 4 the lane closures. It could become a problem if the off-ramp terminal signal is not responsive to
 5 the surge of exiting traffic during the off-peak periods. The excessive exiting traffic, if not
 6 dissipated in time, will form a queue on the off-ramp and even worse, may spill back to the
 7 mainline, which will severely affect safety and operational efficiency. Therefore, it is important
 8 to estimate the possible stress on the exiting ramp terminals caused by the diverted traffic.
 9 Though the increased traffic may not be a threat given the current ramp capacity, attention needs
 10 be raised to proactively manage the exiting ramp traffic before serious traffic incidents happen.
 11



12 **FIGURE 3 Typical ramp volumes on a five minute interval basis.**

13
 14
 15
 16
 17
 18
 19
 20
 21
 22
 23

Table 4 presents the estimated coefficients for variables that predict exiting ramp traffic. Similar to the relative mainline demand reduction model, two statistically significant variables are ramp entrance density downstream of the beginning of lane closure and speed difference. A high R-square value indicates that the two variables along with the intercept can explain 75% of the ramp traffic increase. If the two factors are known, the off-ramp traffic increase can be easily calculated. The factor of entrance density downstream is readily available while the speed difference can be substituted with an estimated value for future application.

1 **TABLE 4 Linear model for exiting ramp traffic.**

Variable	Coefficient	Std. Err.	T-Val	P-Val	R ²	Adj. R ²
Intercept	-0.9662	0.3296	-2.93	0.005		
Signalized Density	0.6052	0.3714	1.63	0.110	0.751	0.740
Delta Speed	-0.081473	0.009077	-8.98	<0.000		

2
3 In summary, the challenge of using the linear model to predict the exiting ramp traffic as
4 well as the diverted traffic to the arterial street lies in the fact that the real speed difference is
5 unavailable for planning any congestion mitigation strategies such as the deployment of traveler
6 information. The inclusion of speed difference provides a good fit according to the R-square and
7 is an important factor in predicting diverted traffic because it signals congestion. Gravity
8 models, on the other hand, do not have desirable goodness of fit according to R-square despite
9 their rational logic, implying that other factors, such as human factors, may affect drivers' route
10 choice appreciatively. Due to the ease of data collection, the gravity model results can still be
11 recommended as a means for predicting traffic diversion.

12 13 **CONCLUSIONS AND FUTURE RESEARCH ACTIVITIES**

14 With the continuous increase of travel demand, traffic congestion has become part of daily life.
15 Every year, the delay cost by peak period traffic congestion is \$710 per traveler (TTI 2007). The
16 Texas Transportation Institute (TTI) 2007 mobility report shows traffic congestion is worsening
17 in American cities of all sizes, creating \$78 billion annual lost hours and 2.9 billion gallons of
18 wasted fuel. Meanwhile, aging roadway infrastructure needs to be rehabilitated and
19 reconstructed and deteriorated pavement needs to be resurfaced and repaved to sustain their
20 quality service for the traveling public. Long-term work zones, due to their size, duration and
21 impact, have been managed with extra efforts. For example, these projects usually categorized
22 as level III and IV in the Wisconsin Transportation Management Plan (TMP) Guidance, which
23 specifies work zone management strategies, traffic impact studies, ITS equipment, optimization
24 of phasing and staging and public outreach. Short-term work zones, primarily maintenance
25 activities, on the other hand do not receive equal attention due to their low impact and high
26 frequency. Lane restriction or closure, however, is still inevitable for most maintenance
27 activities and delay may happen even during the off-peak periods. Sometimes, due to the
28 conflict of scheduling, such activities can be advanced or postponed to a time that overlaps with
29 the peak period when the congestion can be more pronounced. The accumulated impact of short-
30 term closures due to the recurrent maintenance on a segment cannot be overlooked; especially
31 when the segment carries large traffic volume during peak hours or off peak hours.

32 In this study, after a careful review of the Wisconsin Lane Closure System (WisLCS), a
33 total of 13 lane closure events were used. The reasons for a relatively small number of samples
34 compared to a large amount of lane closure events are detailed in the data collection section with
35 the primary reason of data quality. The study designed a novel approach to integrating two state-
36 wide data management systems, WisLCS and V-SPOC with detector data to estimate the traffic
37 impact on both ramp terminals and alternative arterial routes. The results show that up to 15
38 percent of traffic will divert without any advanced traveler information, so called natural
39 diversion. A number of factors such as mainline exit density, entrance density, alternative route
40 length, posted speed limit, signalized intersection density, unsignalized intersection density, etc
41 have been tested to identify which the drivers' decision to divert or not. Both gravity and simple

1 linear models suggest that signalized intersection density on the alternative route is the major
 2 concern to a diversion decision. A high signalized intersection density deters travelers from
 3 taking the arterial alternative routes. Linear models have a better goodness of fit because the
 4 speed difference between the normal and lane closure condition is included. Though speed
 5 difference is an important indicator of possible congestion, it is only available when a lane
 6 closure happens, which does not apply to the operational planning. In general, a low density of
 7 signalized intersections along the arterial routes, high historical mainline traffic, and a short
 8 alternative route distance encourage drivers to divert. Off-ramp terminals may have more severe
 9 traffic problems than arterial streets because of the surge of exiting traffic. If the signal timing at
 10 these ramp terminals cannot dissipate the exiting traffic in a timely fashion, a queue will form
 11 and spill back to the mainline, which is a clear trigger for possible crashes and congestion.

12 The study identifies the factors that help explain the traveler’s diversion behavior,
 13 constructs models to predict diverted traffic and provides data to make informed decisions such
 14 as the deployment of advanced traveler information with heavily impacted corridors. Despite the
 15 small sample size, the results focused on a few segments on I-90 and I-94. In the future, the
 16 approaches can be easily expanded to other segments in other corridors and more data and
 17 locations will be collected to enhance the models and results. Figure 4 shows the short-term
 18 lane closure intensity on all the corridors in the Southeast freeway network in the Milwaukee
 19 Metropolitan area. Combing the features of each corridor and its parallel arterial street
 20 conditions, a corridor traffic impact index caused by short-term lane closures can be developed.
 21 The index can be used to justify the deployment of ITS technologies or other traffic management
 22 strategies for mitigating congestion.

23

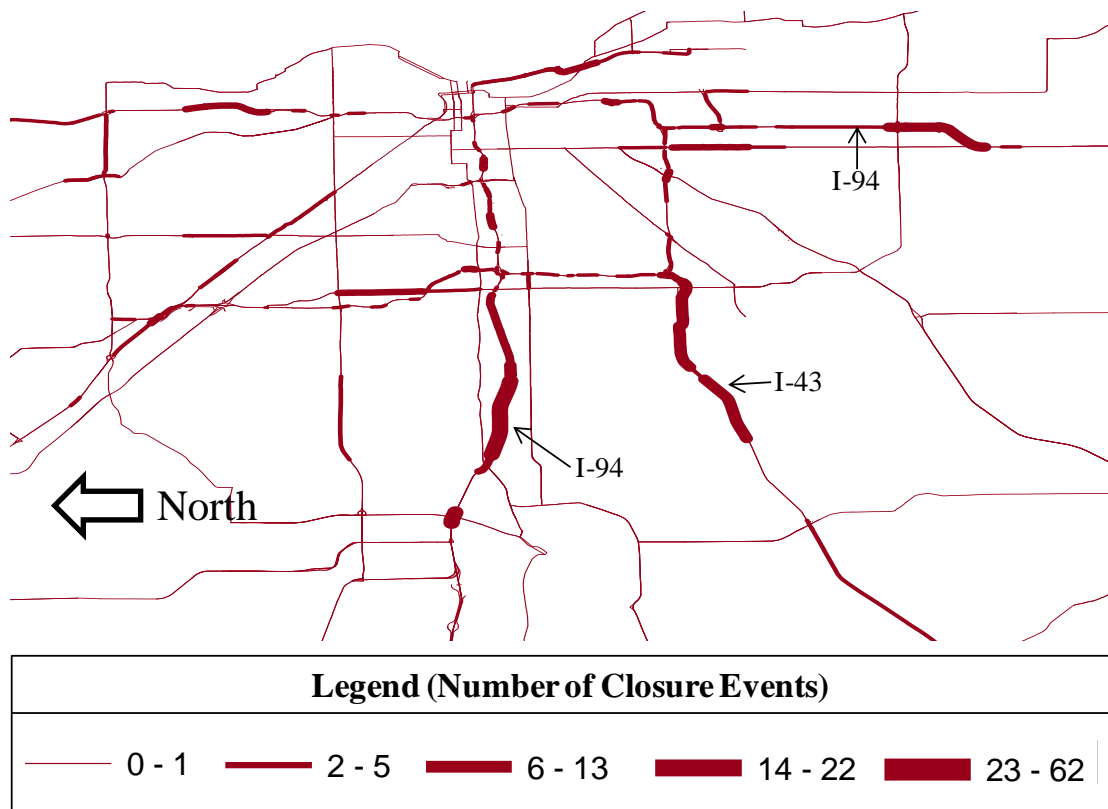


FIGURE 4 From January 2009 to April 2009

24
 25
 26

1 REFERENCES

- 2
- 3 1. M. Abdel-Aty and P.E.F. Abdalla. Modeling drivers diversion from normal routes under
- 4 ATIS using generalized estimating equations and binomial probit link function,
- 5 Transportation 31 (2004) (3), 327-348.
- 6 2. A. Khattak, F. Koppelman and J. Schofer. Stated preference for investigating commuters'
- 7 diversion propensity, Transportation 20 (1993) (2), 107-127.
- 8 3. A. Polydoropoulou, M. Ben-Akiva, A. Khattak, and G. Lauprete. Modeling Revealed and
- 9 Stated En-Route Travel Response to Advanced Traveler Information Systems. Transportation
- 10 Research Record 1537(1996), 38-45.
- 11 4. David Levinson and Hong Huo. Effectiveness of Variable Message Signs. In Transportation
- 12 Research Board Annual Meeting CD-ROM, Paper No. 03-0128, TRB, National Research
- 13 Council, Washington, D.C., 2003.
- 14 5. L.Y., Chu, H.K. Kim, Y. Chung, and W. Recker. Evaluation of Effectiveness of Automated
- 15 Workzone Information Systems. Journal of the Transportation Research Board, 1911(2005),
- 16 73-81.
- 17 6. A. J. Horowitz, I. Weisser, and T. Notbohm. Diversion from a Rural Work Zone Owing to a
- 18 Traffic-Responsive Variable Message Signage System. Transportation Research Record
- 19 1824 (2003), 23-28.
- 20 7. T. Lotan. Effects of Familiarity on Route Choice Behavior in the Presence of Information.
- 21 Transportation Research C 5 (1997), 225-243.
- 22 8. A. Khattak, J. Schofer and Koppelman. Commuters' enroute diversion and return decisions:
- 23 Analysis and implications for advanced traveler information systems, Transportation
- 24 Research Part A 27 (1993), 101-111.
- 25 9. P.G. Benson. Motorist attributes about content of variable message sign, Transportation
- 26 Research Record 1550 (1996), 48-57.
- 27 10. G. L. Ullman. Queuing and natural diversion at short-term freeway work zone lane closures.
- 28 Transportation Research Record 1529 (1998), 19-26.
- 29 11. G. L. Ullman, C.L. Dudek. Theoretical approach to predicting traffic queues at short-term
- 30 work zones on high-volume roadways in urban areas. Transportation Research Record 1824
- 31 (2003), 29-36.
- 32 12. C.Y. Lee, D. A. Noyce, X. Qin. Development of Traffic Delay Assessment Tool for Short-
- 33 term Closures on Urban Freeways, Transportation Research Record 2055 (2008), 39-48.
- 34 13. H.J. Casey. Applications to traffic engineering of the law of retail gravitation. Traffic
- 35 quarterly IX (1), (1955), 23-25.
- 36