

STATE OF ILLINOIS
DEPARTMENT OF TRANSPORTATION
DIVISION OF HIGHWAYS

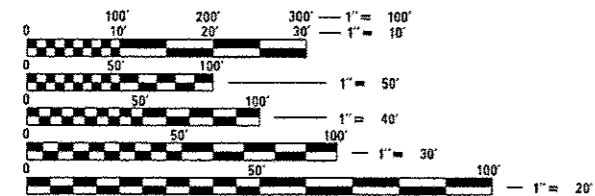
**PROPOSED
HIGHWAY PLANS**

VARIOUS ROUTES
SECTION 2014-0871 PROJ. NO. ACHSIP-000V(012)
SMART TRAFFIC MONITORING SYSTEM
IN VARIOUS LOCATIONS
VARIOUS COUNTIES

C-91-150-15

INDEX OF SHEETS

- 1-COVER SHEET
- 2-GENERAL NOTES/STANDARDS
- 3-SUMMARY OF QUANTITIES
- 4-DETAIL SHEET

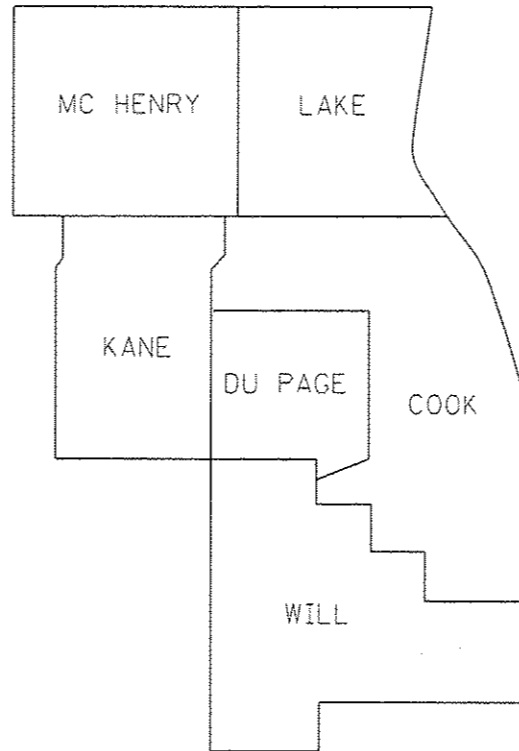


FULL SIZE PLANS HAVE BEEN PREPARED USING STANDARD ENGINEERING SCALES. REDUCED SIZED PLANS WILL NOT CONFORM TO STANDARD SCALES. IN MAKING MEASUREMENTS ON REDUCED PLANS, THE ABOVE SCALES MAY BE USED.

J.U.L.I.E.
JOINT UTILITY LOCATION INFORMATION FOR EXCAVATION
1-800-892-0123
OR 811

PROJECT ENGINEER: PAUL LORTON
PROJECT MANAGER: HUSSAIN MESYEF

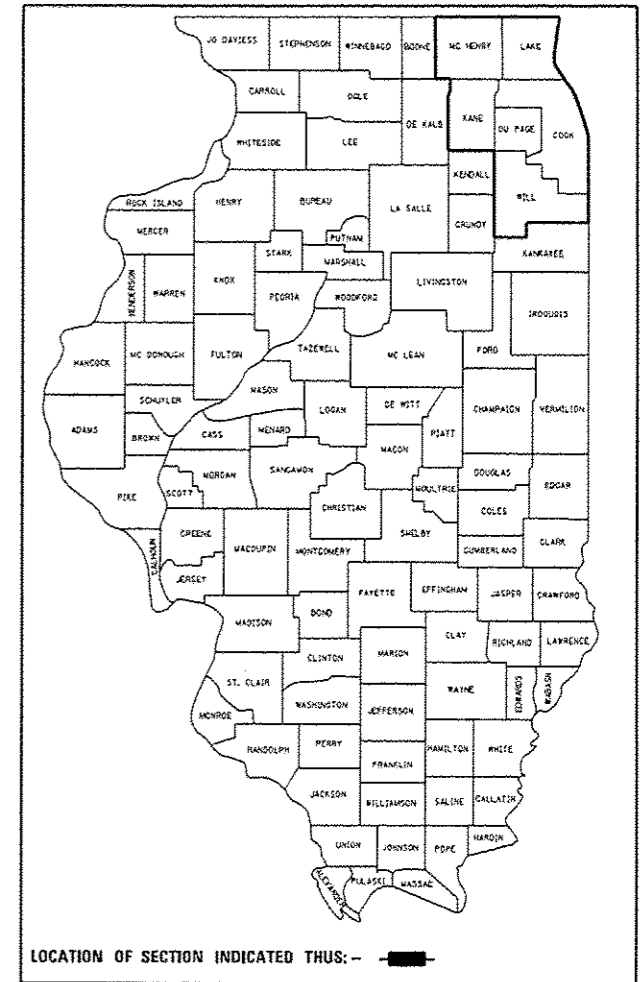
CONTRACT NO. 62A35



*NOTE:
WORK CAN BE LOCATED IN
ANY COUNTIES WITHIN
DISTRICT 1, REGION 1.

F.A. RTE.	SECTION	COUNTY	TOTAL SHEETS	SHEET NO.
VAR	2014-0871	VARIOUS	4	1
ILLINOIS			CONTRACT NO. 62A35	

D-91-150-15



STATE OF ILLINOIS
DEPARTMENT OF TRANSPORTATION
DIVISION OF HIGHWAYS

SUBMITTED NOV 20 14 20 14
John F. [Signature]
DEPUTY DIRECTOR OF HIGHWAYS, REGION ENGINEER

JAN 30 15 20 15
John D. Baranzelli PE
ENGINEER OF DESIGN AND ENVIRONMENT

JAN 30 15 20 15
Omer Osman PE
DIRECTOR OF HIGHWAYS, CHIEF ENGINEER

PRINTED BY THE AUTHORITY
OF THE STATE OF ILLINOIS

STANDARDS

NUMBERS

701101-04
701901-04
701426-07

DESCRIPTIONS

OFF ROAD OPERATIONS, MULTI-LANE, 15' TO 24" FROM PAVEMENT EDGE
TRAFFIC CONTROL DEVICES
LANE CLOSURE, MULTILANE INTERMITTENT OR MOVING OPER., FOR
SPEEDS ≥ 45 MPH

GENERAL NOTES

1. THE LOCATIONS OF THE DELIVERY, SETUP, MAINTENANCE, AND REMOVAL OF THE SMART TRAFFIC MONITORING SYSTEM SHALL BE DETERMINED BY THE DISTRICT 1 TRAFFIC MANAGEMENT CENTER (847-745-4602).
2. ANY CALL-OUT MAY BE CANCELLED AT THE DEPARTMENT'S DISCRETION.

FILE NAME *	USER NAME = gillesm	DESIGNED -	REVISED -	STATE OF ILLINOIS DEPARTMENT OF TRANSPORTATION	GENERAL NOTES AND STANDARDS	F.A. RTE.	SECTION	COUNTY	TOTAL SHEETS	SHEET NO.
S:\GEN\WPDOCS\Tech\Unit\Projects\CADD\07067\ht-pin.dgn	07067\ht-pin.dgn	DRAWN -	REVISED -			VAR	2014-0871	VARIOUS	2	CONTRACT NO. 62A35
	PLOT SCALE = 100.0000 / 1 in.	CHECKED -	REVISED -			SCALE:	SHEET NO. OF SHEETS	STA. TO STA.	FED. ROAD DIST. NO.	ILLINOIS FED. AID PROJECT
	PLOT DATE = 11/3/2014	DATE -	REVISED -							

SUMMARY OF QUANTITIES

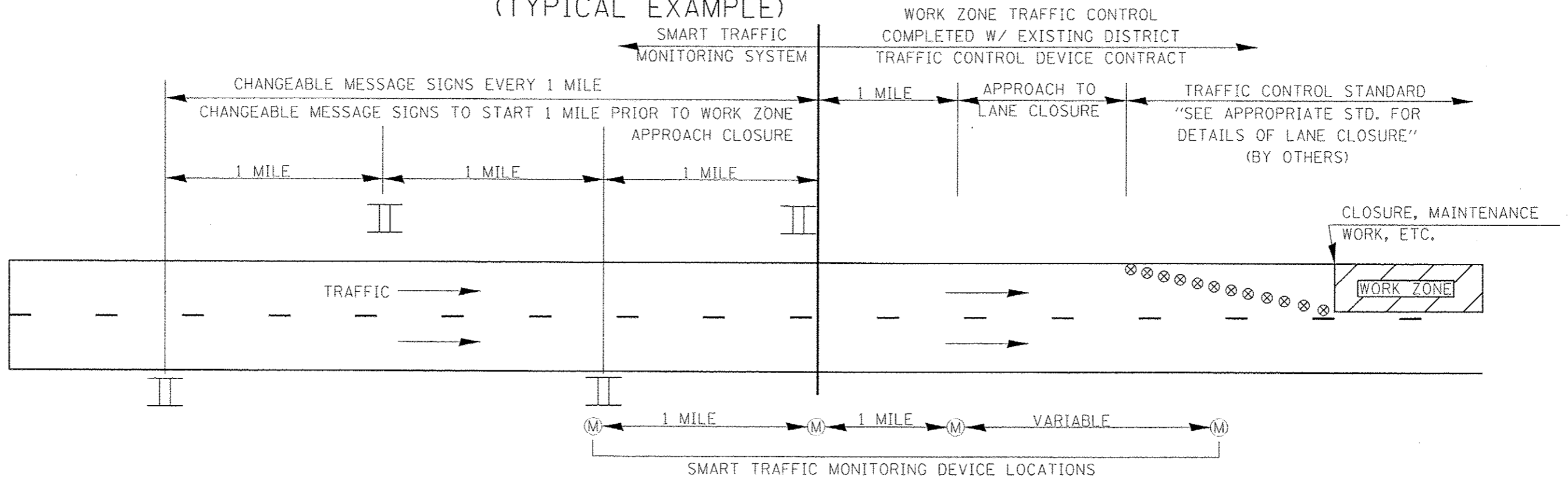
SUMMARY OF QUANTITIES			URBAN 90% FED. 10% STATE TOTAL QUANTITIES	CONSTRUCTION TYPE CODE		
CODE NO	ITEM	UNIT		0021		
X7010237	CHANGEABLE MESSAGE SIGN, SPECIAL	CAL DAY	336	336		
Z008759	CALL OUT	EACH	12	12		
X8570001	SMART TRAFFIC MONITORING SYSTEM	CAL DAY	168	168		

SUMMARY OF QUANTITIES				TOTAL QUANTITIES	CONSTRUCTION TYPE CODE		
CODE NO	ITEM	UNIT	TOTAL QUANTITIES				

3

FILE NAME =	USER NAME = gillstamm	DESIGNED -	REVISED -	STATE OF ILLINOIS DEPARTMENT OF TRANSPORTATION	SUMMARY OF QUANTITIES		F.A. RTE.	SECTION	COUNTY	TOTAL SHEETS
S:\GENY\PPDCS\FishUnits\Projects\CADD\070614\sh-p1.mxd	DRAWN -	REVISED -	REVISED -				VAR	2014-0874	VARIOUS	3
	PLOT SCALE = 1/2" = 100'	CHECKED -	REVISED -		SCALE:	SHEET OF SHEETS	STA. TO STA.	CONTRACT NO. 62A35		
	PLOT DATE = 10/24/2014	DATE -	REVISED -					ILLINOIS FED. AID PROJECT		

SMART TRAFFIC MONITORING SYSTEM (CALL-OUT) (TYPICAL EXAMPLE)



***NOTES:**

- ① ACTUAL LOCATION OF SMART MONITORING DEVICES SHALL BE BASED ON MANUFACTURER'S SPECIFICATIONS AND RECOMMENDATIONS ALONG WITH THE SPECIAL PROVISIONS AND AS DIRECTED BY THE ENGINEER.
- ② MODIFICATIONS MAY BE NECESSARY TO ACCOMODATE SPECIFIC CLOSURES. ALL CHANGES WILL BE APPROVED BY THE ENGINEER.

LEGEND	
II	CHANGEABLE MESSAGE SIGN LOCATIONS
Ⓜ	SMART TRAFFIC MONITORING DEVICE LOCATION
⊗	DRUM/BARRICADES PER APP. STANDARD (BY OTHERS)

FILE NAME =	USER NAME = gillettem	DESIGNED -	REVISED -	STATE OF ILLINOIS DEPARTMENT OF TRANSPORTATION	SMART TRAFFIC MONITORING SYSTEM (CALL-OUT) (TYPICAL EXAMPLE)	VAR. RTE.	SECTION	COUNTY	TOTAL SHEETS	SHEET NO.	
S:\GEN\MPDOCS\Tech\Units\Projects\CADD\376\67\ht-pln.dgn		DRAWN -	REVISED -			VAR.	2014-0871	VARIOUS	4		
PLOT SCALE = 1/8" = 1' / in.		CHECKED -	REVISED -			SCALE:	SHEET NO.	OF SHEETS	STA.	TO STA.	FED. ROAD DIST. NO. [ILLINOIS] FED. AID PROJECT
PLOT DATE = 11/3/2014		DATE -	REVISED -								CONTRACT NO. 62A35