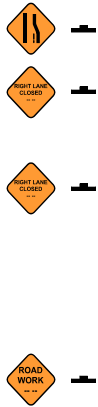


Queue Detection System With Two PCMS Boards Deployment Plan 1 (Max Design Queue ≤ 7.5 Miles)

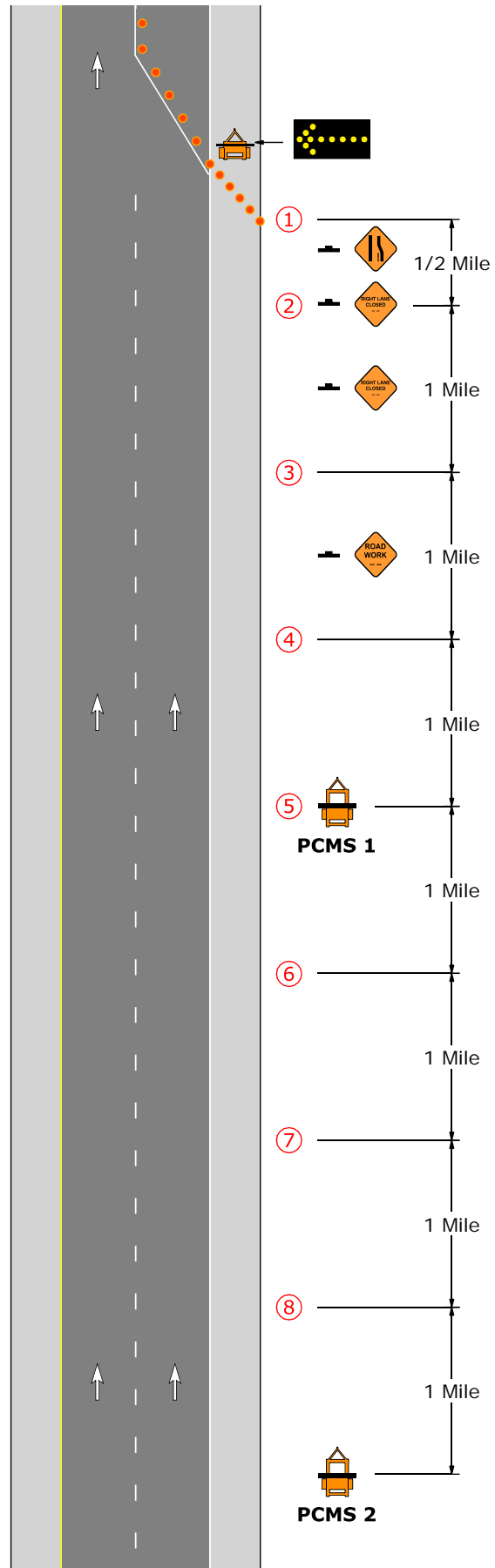
General Notes

1. Location of speed detectors and PCMS can be adjusted slightly based upon site conditions.
2. Refer to PennDOT Publication 213 for guidance in placing and delineating trailer-mounted equipment.



LEGEND

- 1 Non-Intrusive Traffic Speed Detector
- Portable Changeable Message Sign
- Trailer-Mounted Arrow Panel
- Temporary Traffic Control Sign
- ● ● Channelizing Devices



Queue Detection System With One PCMS Board Deployment Plan 2 (Max Design Queue ≤ 3.5 Miles)

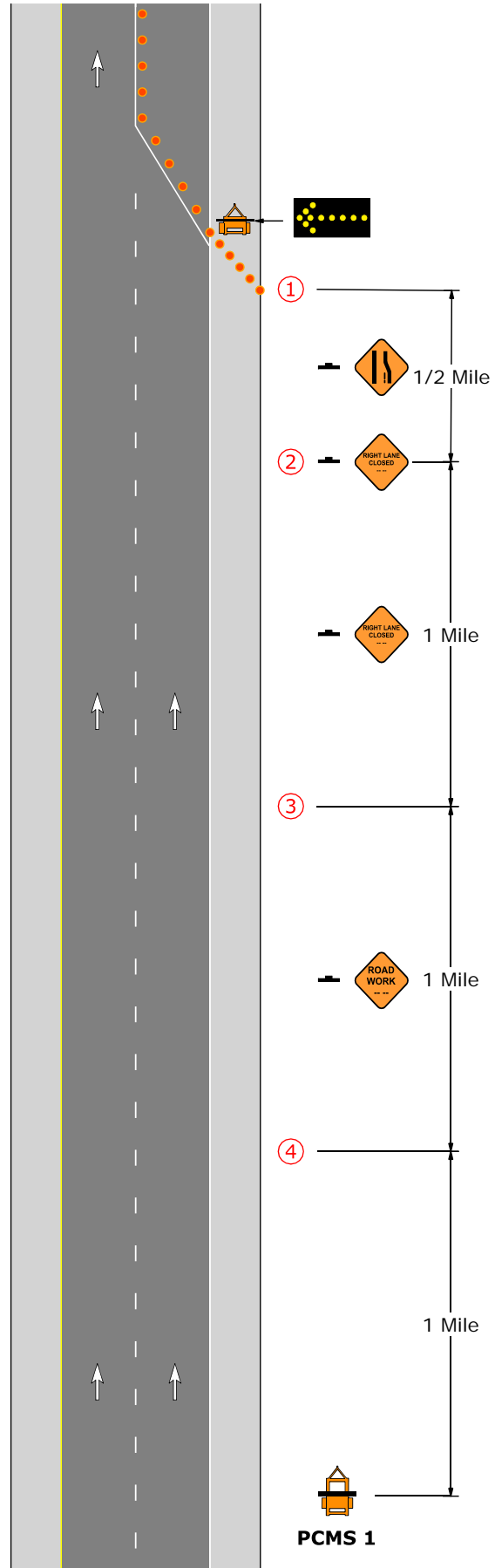
General Notes

1. Location of speed detectors and PCMS can be adjusted slightly based upon site conditions.
2. Refer to PennDOT Publication 213 for guidance in placing and delineating trailer-mounted equipment.



LEGEND

- 1 Non-Intrusive Traffic Speed Detector
- Portable Changeable Message Sign
- Trailer-Mounted Arrow Panel
- Temporary Traffic Control Sign
- Channelizing Devices



PCMS 1

Queue Detection System With Two PCMS Boards Deployment Plan 2 (Max Design Queue ≤ 3.5 Miles)

| PCMS 1 Message | Last 5-Minute Average Speed V (MPH) | | | |
|--------------------------------|-------------------------------------|-------------------------|-------------------------|-------------------------|
| | ④ | ③ | ② | ① |
| ROAD WORK AHEAD | V > 55 OR V = 0.0 | V > 55 OR V = 0.0 | V > 55 OR V = 0.0 | V > 55 OR V = 0.0 |
| SLOW TRAFFIC 3 MILES | V > 55 OR V = 0.0 | V > 55 OR V = 0.0 | V > 55 OR V = 0.0 | $40 \leq V < 55$ |
| SLOW TRAFFIC 2 MILES | V > 55 OR V = 0.0 | V > 55 OR V = 0.0 | $40 \leq V < 55$ | V > 40 OR V = 0.0 |
| SLOW TRAFFIC 1 MILE | V > 55 OR V = 0.0 | $40 \leq V < 55$ | V > 40 OR V = 0.0 | V > 40 OR V = 0.0 |
| SLOW TRAFFIC AHEAD | $40 \leq V < 55$ | V > 40 OR V = 0.0 | V > 40 OR V = 0.0 | V > 40 OR V = 0.0 |
| STOPPED TRAFFIC 3 MILES | V > 40 OR V = 0.0 | V > 40 OR V = 0.0 | V > 40 OR V = 0.0 | $0.0 \leq V < 40$ |
| STOPPED TRAFFIC 2 MILES | V > 40 OR V = 0.0 | V > 40 OR V = 0.0 | $0.0 \leq V < 40$ | Any Value |
| STOPPED TRAFFIC 1 MILE | V > 40 OR V = 0.0 | $0.0 \leq V < 40$ | Any Value | Any Value |
| STOPPED TRAFFIC AHEAD | $0.0 \leq V < 40$ | Any Value | Any Value | Any Value |