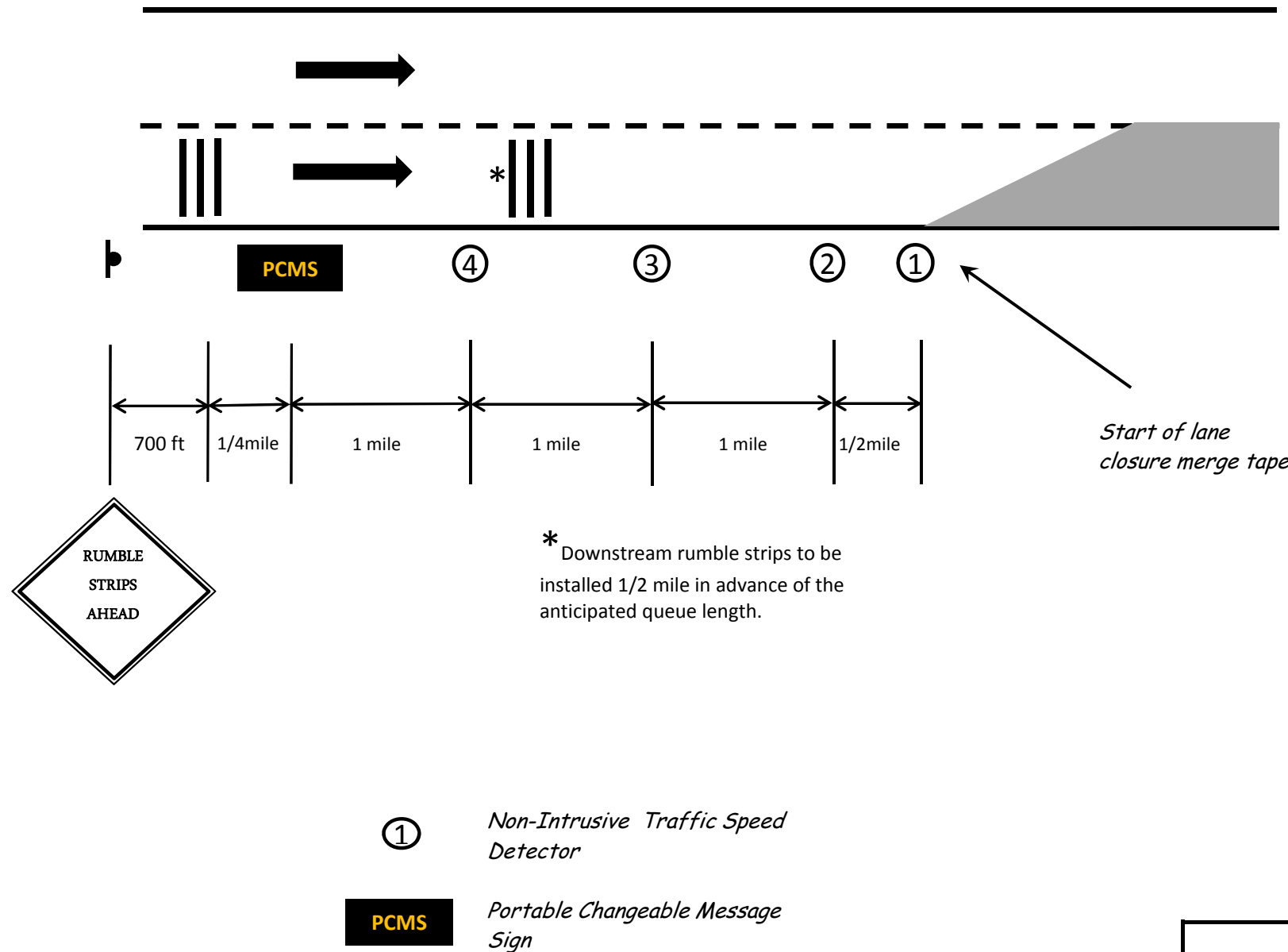


PCMS Operations Rules: Deployment Plan 1 (Max Design Queue ≤ 3.5 Miles)

PCMS Message	Last 5-Minute Average Speed V (mph)			
	④	③	②	①
ROAD WORK AHEAD	V > 55 OR V = 0.0	V > 55 OR V = 0.0	V > 55 OR V = 0.0	V > 55 OR V = 0.0
SLOW TRAFFIC 3 MILES	V > 55 OR V = 0.0	V > 55 OR V = 0.0	V > 55 OR V = 0.0	40 ≤ V < 55
SLOW TRAFFIC 2 MILES	V > 55 OR V = 0.0	V > 55 OR V = 0.0	40 ≤ V < 55	V > 40 OR V = 0.0
SLOW TRAFFIC 1 MILE	V > 55 OR V = 0.0	40 ≤ V < 55	V > 40 OR V = 0.0	V > 40 OR V = 0.0
SLOW TRAFFIC AHEAD	40 ≤ V < 55	V > 40 OR V = 0.0	V > 40 OR V = 0.0	V > 40 OR V = 0.0
STOPPED TRAFFIC 3 MILES	V > 40 OR V = 0.0	V > 40 OR V = 0.0	V > 40 OR V = 0.0	0.0 ≤ V < 40
STOPPED TRAFFIC 2 MILES	V > 40 OR V = 0.0	V > 40 OR V = 0.0	0.0 ≤ V < 40	Any value
STOPPED TRAFFIC 1 MILE	V > 40 OR V = 0.0	0.0 ≤ V < 40	Any value	Any value
STOPPED TRAFFIC AHEAD	0.0 ≤ V < 40	Any value	Any value	Any value

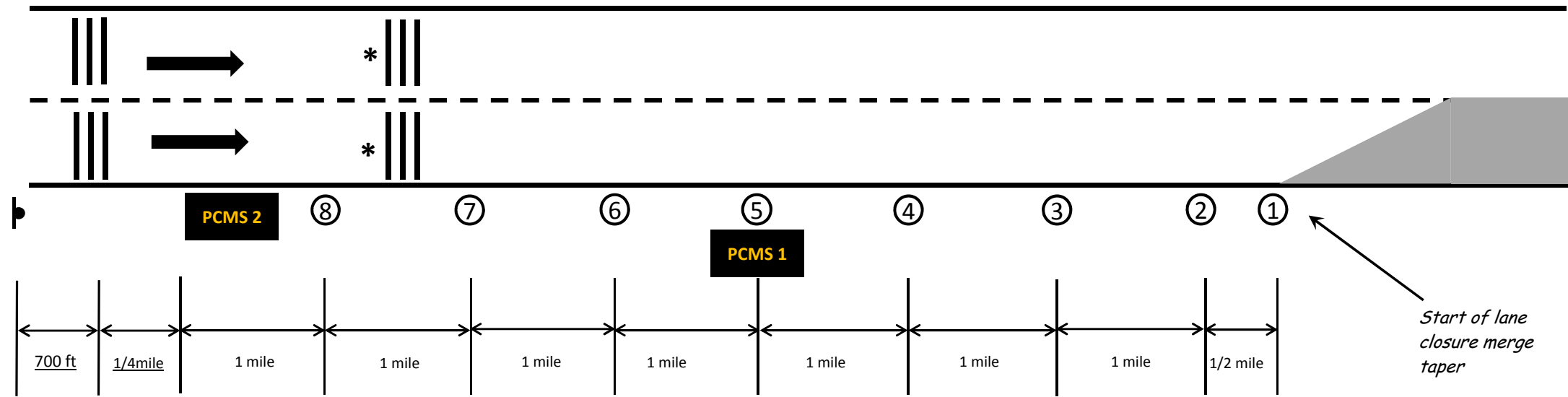
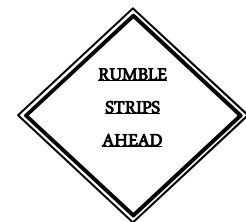


Note: Location of the sensors and the PCMS can be adjusted slightly based on site conditions (ramp locations, other static signing, overpasses, etc.)



The seal appearing on this document was authorized by Larry J. Colclasure, P.E. 65936, on _____, 20____.

LANE CLOSURE MONITORING SYSTEM PLAN 1				
© TxDOT May 1987				
DN.: - LR/MT		SHEET 1 of 2		
CK.: -				
DW.: - DN				
STATE DIST.	FED. REGION	FEDERAL AID PROJECT	SHEET	
WAC	6			
COUNTY	CONTROL	SEC	JOB	HIGHWAY
Bell	0015	14	091	IH 35



PCMS Operations Rules: Deployment Plan 2 (Max Design Queue ≤ 7.5 Miles)

* Downstream rumble strips to be installed 1/2 mile in advance of the anticipated queue length.

- ① Non-Intrusive Traffic Speed Detector
- PCMS Portable Changeable Message Sign

PCMS 2 Message	PCMS 1 Message	Last 5-Minute Average Speed V (mph)							
		⑧	⑦	⑥	⑤	④	③	②	①
WATCH YOUR SPEED	ROAD WORK AHEAD	V > 55 OR V = 0.0	V > 55 OR V = 0.0	V > 55 OR V = 0.0	V > 55 OR V = 0.0	V > 55 OR V = 0.0	V > 55 OR V = 0.0	V > 55 OR V = 0.0	V > 55 OR V = 0.0
WATCH YOUR SPEED	SLOW TRAFFIC 3 MILES	V > 55 OR V = 0.0	V > 55 OR V = 0.0	V > 55 OR V = 0.0	V > 55 OR V = 0.0	V > 55 OR V = 0.0	V > 55 OR V = 0.0	V > 55 OR V = 0.0	40 ≤ V < 55
WATCH YOUR SPEED	SLOW TRAFFIC 2 MILES	V > 55 OR V = 0.0	V > 55 OR V = 0.0	V > 55 OR V = 0.0	V > 55 OR V = 0.0	V > 55 OR V = 0.0	V > 55 OR V = 0.0	40 ≤ V < 55	V > 40 OR V = 0.0
WATCH YOUR SPEED	SLOW TRAFFIC 1 MILE	V > 55 OR V = 0.0	V > 55 OR V = 0.0	V > 55 OR V = 0.0	V > 55 OR V = 0.0	V > 55 OR V = 0.0	40 ≤ V < 55	V > 40 OR V = 0.0	V > 40 OR V = 0.0
WATCH YOUR SPEED	SLOW TRAFFIC AHEAD	V > 55 OR V = 0.0	V > 55 OR V = 0.0	V > 55 OR V = 0.0	V > 55 OR V = 0.0	40 ≤ V < 55	V > 40 OR V = 0.0	V > 40 OR V = 0.0	V > 40 OR V = 0.0
WATCH YOUR SPEED	STOPPED TRAFFIC 3 MILES	V > 40 OR V = 0.0	V > 40 OR V = 0.0	V > 40 OR V = 0.0	V > 40 OR V = 0.0	V > 40 OR V = 0.0	V > 40 OR V = 0.0	V > 40 OR V = 0.0	0.0 ≤ V < 40
WATCH YOUR SPEED	STOPPED TRAFFIC 2 MILES	V > 40 OR V = 0.0	V > 40 OR V = 0.0	V > 40 OR V = 0.0	V > 40 OR V = 0.0	V > 40 OR V = 0.0	V > 40 OR V = 0.0	0.0 ≤ V < 40	Any value
WATCH YOUR SPEED	STOPPED TRAFFIC 1 MILE	V > 40 OR V = 0.0	V > 40 OR V = 0.0	V > 40 OR V = 0.0	V > 40 OR V = 0.0	V > 40 OR V = 0.0	0.0 ≤ V < 40	Any value	Any value
WATCH YOUR SPEED	STOPPED TRAFFIC AHEAD	V > 40 OR V = 0.0	V > 40 OR V = 0.0	V > 40 OR V = 0.0	V > 40 OR V = 0.0	0.0 ≤ V < 40	Any value	Any value	Any value

PCMS 2 Message	PCMS 1 Message	Last 5-Minute Average Speed V (mph)							
		⑧	⑦	⑥	⑤	④	③	②	①
SLOW TRAFFIC 3 MILES	LANE CLOSED 3 MILES	V > 55 OR V = 0.0	V > 55 OR V = 0.0	V > 55 OR V = 0.0	40 ≤ V < 55	V > 40 OR V = 0.0	V > 40 OR V = 0.0	V > 40 OR V = 0.0	V > 40 OR V = 0.0
SLOW TRAFFIC 2 MILES	LANE CLOSED 3 MILES	V > 55 OR V = 0.0	V > 55 OR V = 0.0	40 ≤ V < 55	V > 40 OR V = 0.0	V > 40 OR V = 0.0	V > 40 OR V = 0.0	V > 40 OR V = 0.0	V > 40 OR V = 0.0
SLOW TRAFFIC 1 MILE	LANE CLOSED 3 MILES	V > 55 OR V = 0.0	40 ≤ V < 55	V > 40 OR V = 0.0	V > 40 OR V = 0.0	V > 40 OR V = 0.0	V > 40 OR V = 0.0	V > 40 OR V = 0.0	V > 40 OR V = 0.0
SLOW TRAFFIC AHEAD	LANE CLOSED 3 MILES	40 ≤ V < 55	V > 40 OR V = 0.0	V > 40 OR V = 0.0	V > 40 OR V = 0.0	V > 40 OR V = 0.0	V > 40 OR V = 0.0	V > 40 OR V = 0.0	V > 40 OR V = 0.0
STOPPED TRAFFIC 3 MILES	LANE CLOSED 3 MILES	V > 40 OR V = 0.0	V > 40 OR V = 0.0	V > 40 OR V = 0.0	0.0 ≤ V < 40	Any value	Any value	Any value	Any value
STOPPED TRAFFIC 2 MILES	LANE CLOSED 3 MILES	V > 40 OR V = 0.0	V > 40 OR V = 0.0	0.0 ≤ V < 40	Any value	Any value	Any value	Any value	Any value
STOPPED TRAFFIC 1 MILE	LANE CLOSED 3 MILES	V > 40 OR V = 0.0	0.0 ≤ V < 40	Any value	Any value	Any value	Any value	Any value	Any value
STOPPED TRAFFIC AHEAD	LANE CLOSED 3 MILES	0.0 ≤ V < 40	Any value	Any value	Any value	Any value	Any value	Any value	Any value

Note: Location of the sensors and the PCMS can be adjusted slightly based on site conditions (ramp locations, other static)



The seal appearing on this document was authorized by Larry J. Colclasure, P.E. 65936, on _____, 20____.

LANE CLOSURE MONITORING SYSTEM PLAN 2

© TxDOT May 1987

DN.: - LR/MT		SHEET 2 of 2	
CK.: -			
DW.: - DN			
STATE DIST.	FED. REGION	FEDERAL AID PROJECT	SHEET
WAC	6		
COUNTY	CONTROL	SEC	JOB
McLennan	0014	08	075
			IH 35