



What Is an ICS?

An Incident Command System (ICS) coordinates all of the organizations at the scene of a disaster.



ICS is a structure to coordinate initial response through site clean up.

ICS procedures explain how to organize:

- personnel,
- facilities,
- equipment, and
- communications.

In a disaster response, a contractor and all employees work under the ICS.

The Incident Site Commander becomes the new site manager.

Training in the ICS is required for all workers who are engaged in disaster response.

How Does Disaster Impact Our Lives?

Take extra measures to cope with DR work. Reduce the impact in these ways:

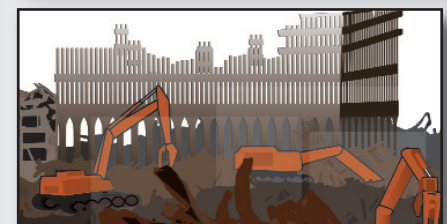
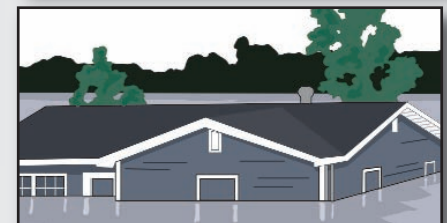
- Recognize that disaster work makes us vulnerable to stress-induced illness.
- Set priorities and pace work to avoid physical exhaustion.
- Resume normal sleep schedule as soon as possible.
- Get plenty of rest and take frequent breaks BEFORE exhaustion builds up.
- Be alert to emotional exhaustion or strain.

If family or friends are not available, consult with the professionals at community health centers.

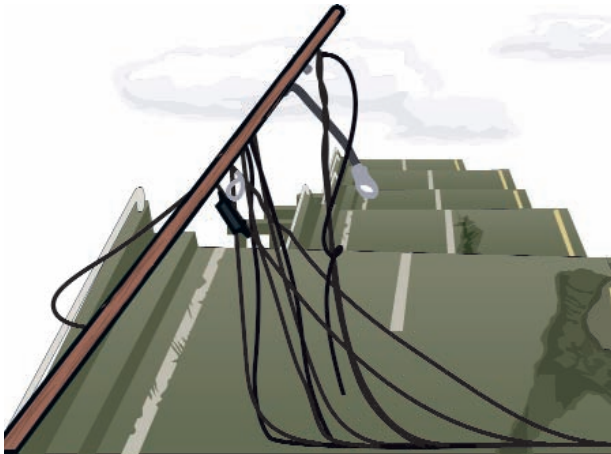


©2009 Laborers Health & Safety Fund of North America, Washington, DC
 All rights reserved. This material was produced under grant number 46C3-HT06 from the Occupational Safety and Health Administration and is based upon work supported by the Federal Highway Administration under grant agreement DTFH61-06-G-00007. Any opinions, findings, and conclusions or recommendations expressed in this publication are those of the Author(s) and do not necessarily reflect the views or policies of the U.S. Department of Labor or the Federal Highway Administration. No statement made in this booklet should be construed to convey an impression that any member of the consortium, its affiliates, or employees have assumed any part of the employer's exclusive legal responsibility for providing a "safe and healthful workplace" as mandated by the Occupational Safety and Health Act. Nor does mention of trade names, commercial products, or organizations imply endorsement by the U.S. Government. Produced for the consortium by FOF Communications.

Disaster Response



What Is Disaster Response?



Disaster Response is an **action plan** to deal with natural or man-made incidents.

Natural disaster incidents:

- Hurricane
- Tornado
- Earthquake
- Fire
- Flood
- Epidemic/Pandemic

Disaster incidents caused by humans or human system flaws:

- Accident
- Accidental Release
- Intentional Release
- Bombs/Explosives

How Does DR Differ From Road Work?

Disaster response for road workers means many important differences in:

- command structure,
- hazard exposures, and
- schedules.

Some possible differences between road work and disaster response are:

- New command structure.
- New hazard exposures.
- Unplanned or unscheduled work and extended hours.
- Possible changes in housing.
- Contractor operations disrupted.
- Shortages in supplies, materials, and personnel.
- Unpredictable motorists.
- Stress.



What Special Health/Safety Issues Arise?

Disasters may create unique health and safety challenges. Some possible health issues include:

- Contamination of water and/or the environment.
- Disruption of the food supply.
- Disruption of power and energy.
- Hygiene.
- Immunizations.



Some possible safety issues include:

- Pressure to bypass normal safety protocols.
- Difficulty getting safety gear or materials.
- Internal and external communications.
- Unpredictable, panicked public/motorists.
- Equipment staging.

